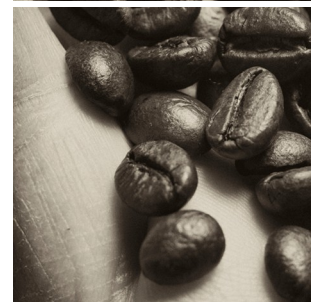
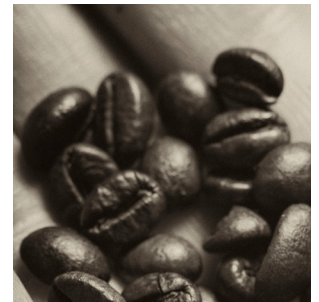


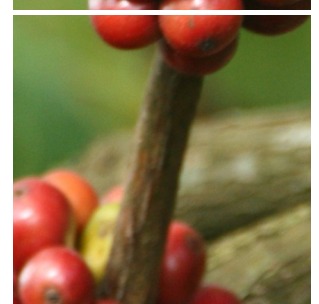
Siro Touch 1435 [a] Bean2filter® filterfresh®



Product



Information



Key features

- filterfresh® & whole bean grinder
- 5.7" full color touch screen
- Aluminum front
- Illuminated cup stands
- Separate hot water outlet
- Individual product counters
- Cup sensor

Options

- Front branding
- On-screen communication options
- Connect.Me® (online monitoring)
- Base cabinet with condiment trays
- Cupmechanism : 220 cups (7 Oz Sq)
- Table with cup dispenser
- Integrated payment systems

Siro Touch 1435 [a] Bean2filter® filterfresh®



Dimensions

	mm
Machine	h 870
	w 465
	d 530
Base Cabinet	h 850
	w 465
	d 530
Weight	50 kg

Selections

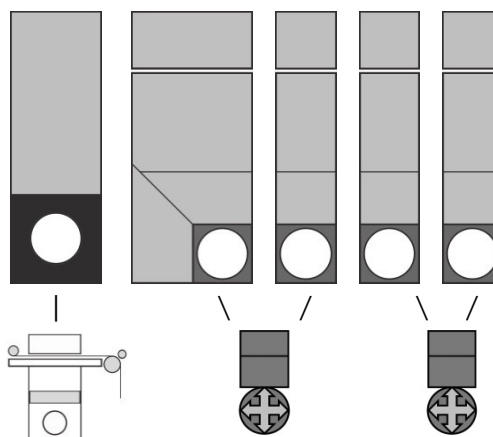
Whole Bean Coffee	Hot Chocolate
Short Coffee	Chocomilk
Cappuccino	Soup
Cafe au Lait	
Espresso	
Café Latte	Whitener
	Sugar
Customized recipes**	Hot water
Chilled (sparkling) water **	Jug Selections

** optional, ask for details & conditions

Specifications

- MoVeC-ICEq® & USB upload
- 5,7" full color touch screen
- User Interface : DJD/TUD
- Menu structure for selections
- Direct start optional
- Illuminated cupstand
- Cup-sensor
- Strength selections menus
- Connection for payment systems [MDB]
- Boiler: 5 Liter

Canisters



Connections

- 240 Volt AC
- 50/60 Hz
- 2400 Watt
- 10-16Amp
- 3/4" BSP [15 mm] mains
- waterfilter & waterlock recommended
- USB
- LAN or Wifi

Capacities

	#	Size	Gram	Cups
Whole bean coffee	1	BC	1100	150
Chocolate	2	120E	3450	170
Milktopping	3	60E	1100	180
Sugar	4	60E	2000	330
Soup	5	60E	1200	130
Filter paper [cups/roll]				≥ 2250
Waste bucket				≥ 175

(# cups may vary depending on settings)

